

GE Mining
Industrea

BULLETIN 30191

PET BRAKES



Prepared by: **Ross Stutchbury**

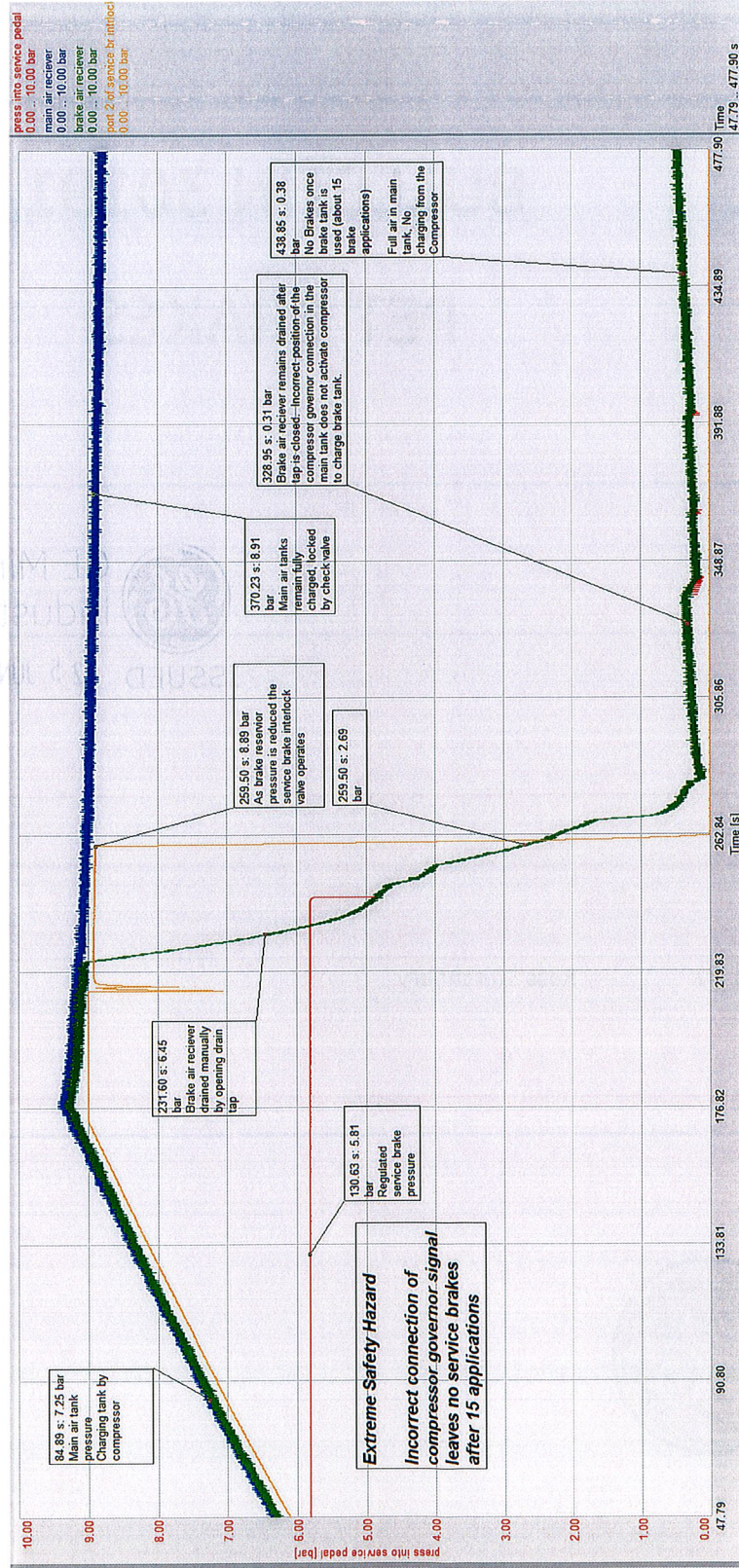




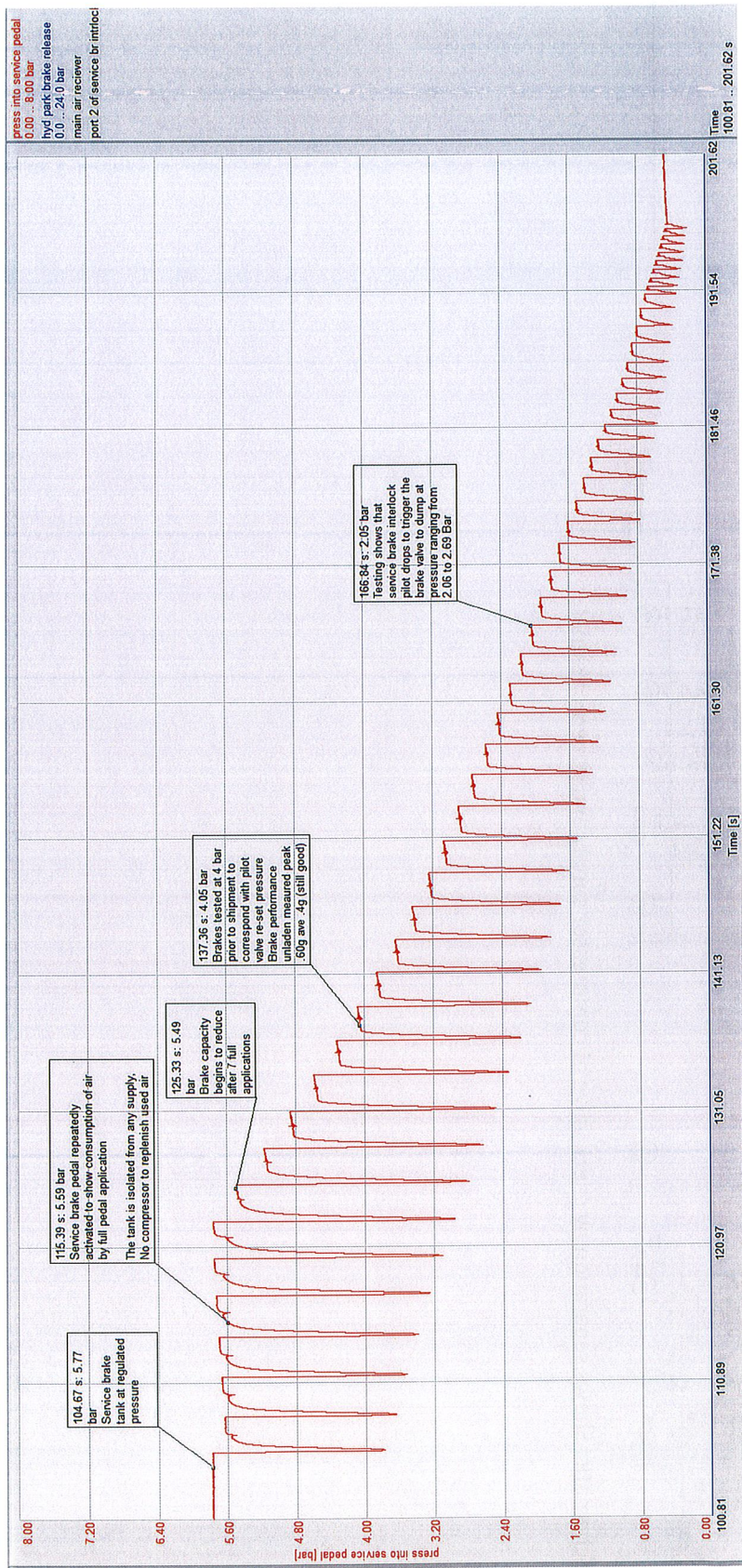
General Recall: PET SERVICE BRAKE: **Extreme Safety Hazard**

Immediate action is required to correct the service brake system to ensure the service brake pressure is maintained during service. Incorrect connection of the compressor governor signal leaves no service brakes available after 15 service brake applications.

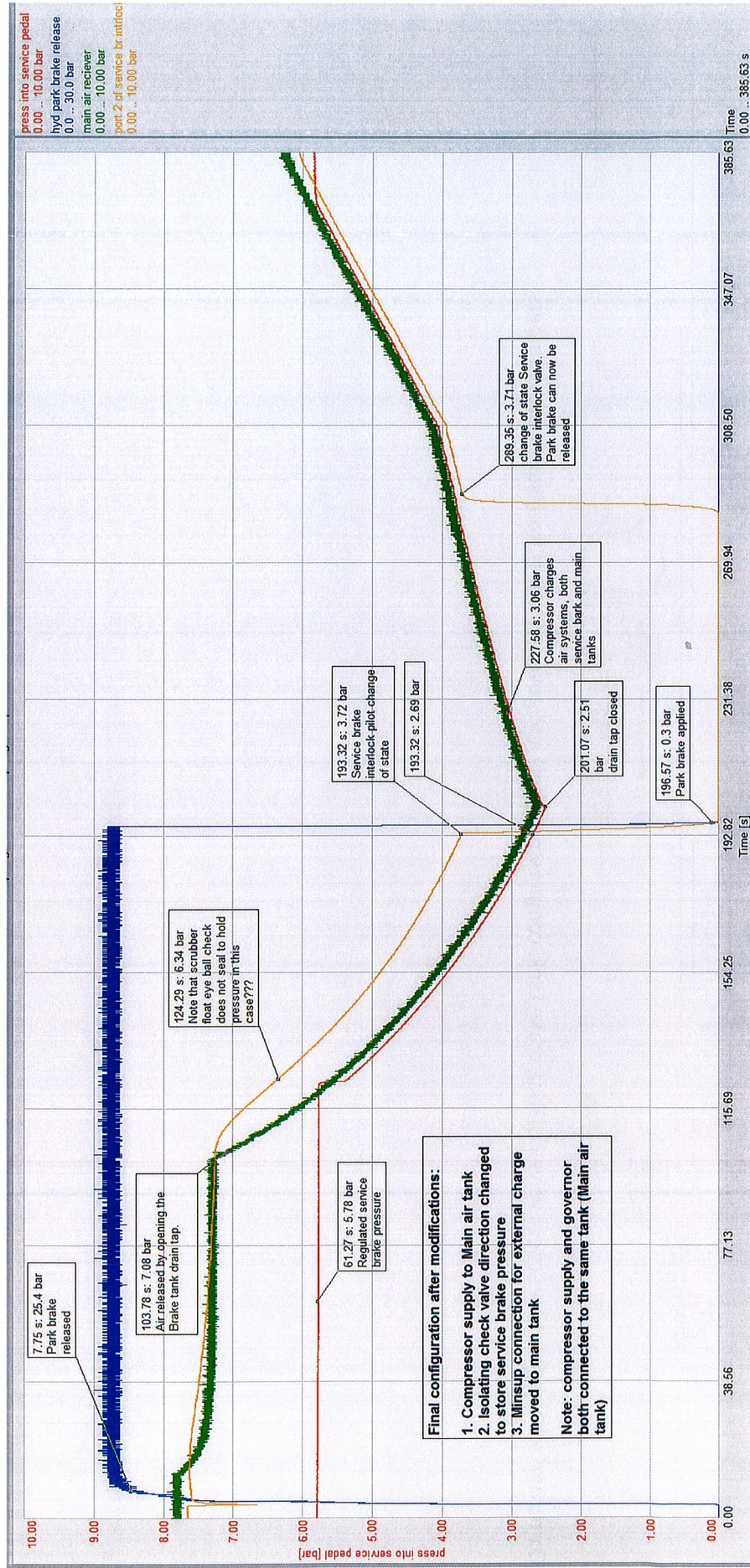
It is essential that the compressor governor signal be connected to the same reservoir chamber as the compressor supply line.



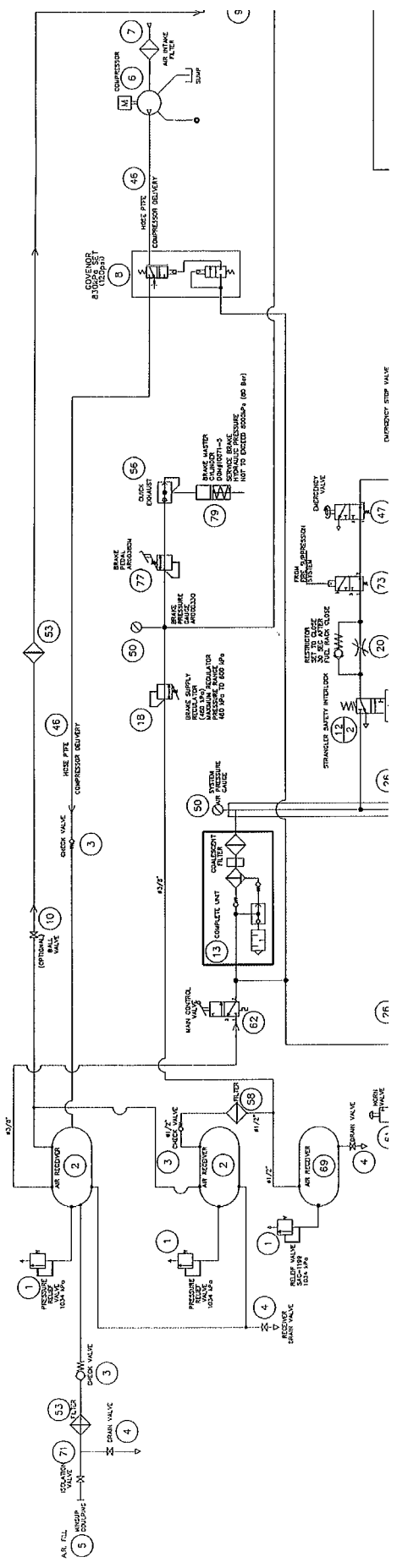
Graph 1 shows the condition where the brake air receiver is not charged to replenish air consumption.



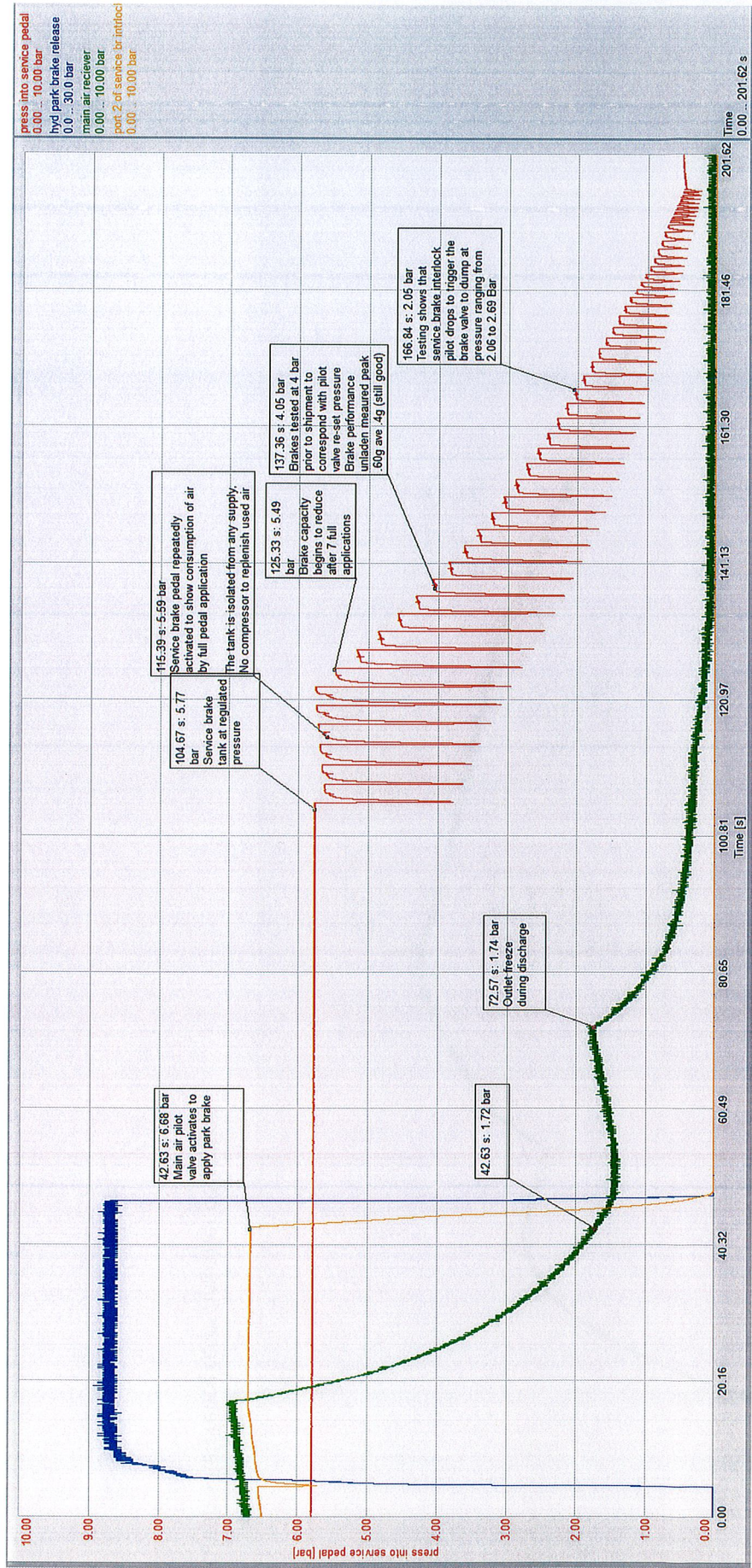
Graph 2 shows capacity of brake tank from regulated pressure isolated from compressor supply.



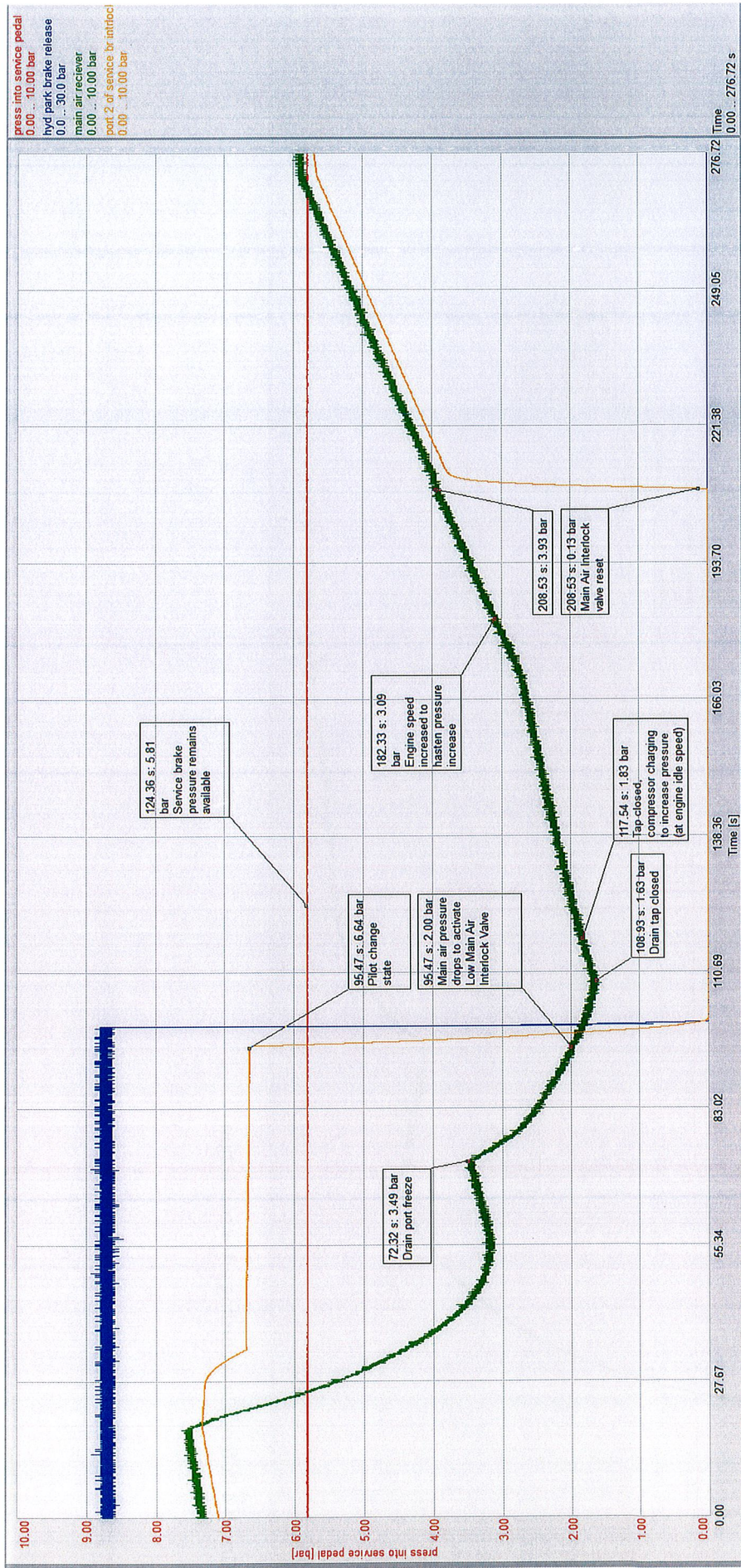
Graph 3 Performance of system with corrections as noted.



Correction schematic: shows check valve isolating brake tank, compressor supply and governor signal from start tank chambers.



Graph 4 Reference recording after correction



Graph 5 Reference recording after correction